

Not all spa heaters are created equal!

CosmoHeat™ Titanium Heater

Addicted to Success...

Allergic to Failure...

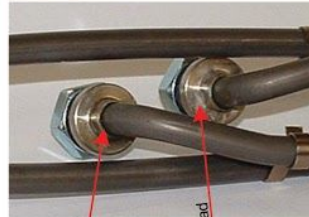


Patented O-Ring Seals,
Single Sheath,
No Bulkheads,
No Epoxy,
No Braising,
No Welding

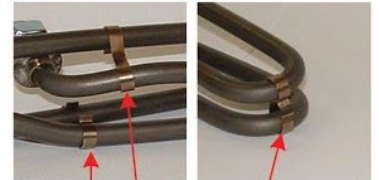
No Corrosion!

We Kept It Simple...

Other Manufacturers Titanium Heater



epoxy
Item 4
bulkhead



Item 5

- 1. Dual-Sheathed** Titanium Heater with an outer Titanium sheath and an inner Stainless Steel sheath.
- A dual-sheathed element may trap air between the inner and outer sheaths (during manufacturing). This may create a weak point for a premature failure.
- A dual-sheathed element cannot be 100% efficient transferring heat energy. The 40" long 5,500 Watt Titanium heater is at **136.77 Watt Density** (at 100% efficiency).
- Two crimped bulkheads** (may or may not be Titanium) **sealed with epoxy** and the bulkheads are submerged in the spa water. An epoxy seal is not ideal for this application.
- Structural support clips** (may or may not be Titanium) are used to prevent rattling noises when powered by large pumps. Unfortunately, the clips reduce the heaters life expectancy.
- Because of items 1 through 5 listed above, we do not recommend this style of heater for salt water or corrosive water environments using chlorine or bromine.**

Good heaters don't need to be replaced every 2 years.